

# AWG 560 H-SR

## ACCESSORIES

Thermally insulated external wall outlet for air routing from air source heat pumps installed indoors, with oval connection.

### The main features

Condensate run marks on the wall face are prevented by a wide drip edge on the frame

Integral rodent guard prevents small animals and leaves getting in

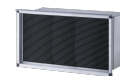
Good protection from weather and low pressure losses, thanks to optimised fin geometry

PRODUCT-NO.: 233837



**AWG 560 H-GL**

Product-No.: 232956



**AWG 560 L**

Product-No.: 231041



**AWG 560 V-GL**

Product-No.: 232957



**AWG 560 V-SR**

Product-No.: 233838



**AWG 600 L**

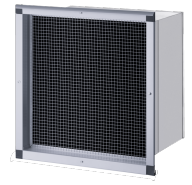
Product-No.: 231044



Type	AWG 560 H-GL	AWG 560 H-SR	AWG 560 L
Part no.	232956	233837	231041

## Technical data

Height	490 mm	490 mm	477 mm
Width	897 mm	897 mm	878 mm
Depth	627 mm	627 mm	625 mm
Nominal diameter	560 mm	560 mm	560 mm
Min. outlet aperture	830x430 mm	830x430 mm	830x430 mm
Wall thickness	280 - 500 mm	280 - 500 mm	280 - 500 mm
Max. air flow rate	3500 m <sup>3</sup> /h	3500 m <sup>3</sup> /h	3500 m <sup>3</sup> /h
Colour	RAL 9006	silver-metallic	Aluminium, anodised
Material	Sheet steel	Sheet steel	Sheet steel
Version	Horizontal with grey painted weather grille	Horizontal weather grille painted in metallic silver	For light well version



Type	<b>AWG 560 V-GL</b>	<b>AWG 560 V-SR</b>	<b>AWG 600 L</b>
Part no.	232957	233838	231044

## Technical data

Height	894 mm	894 mm	647 mm
Width	483 mm	483 mm	649 mm
Depth	627 mm	627 mm	525 mm
Nominal diameter	560 mm	560 mm	560 mm
Min. outlet aperture	430x830 mm	430x830 mm	600x600 mm
Wall thickness	280 - 500 mm	280 - 500 mm	260 - 400 mm
Max. air flow rate	3500 m <sup>3</sup> /h	3500 m <sup>3</sup> /h	3500 m <sup>3</sup> /h
Colour	RAL 9006	silver-metallic	Aluminium, anodised
Material	Sheet steel	Sheet steel	Sheet steel
Version	Vertical with grey painted weather grille	Vertical with grey painted weather grille	For light well version

## **Contact information**

You have questions? We appreciate to help you:

Call **+49 5531 - 7020**

Write an email to **[info@stiebel-eltron.com](mailto:info@stiebel-eltron.com)**

## **Installation information**

Please ask your local power supply utility or a registered electrician to install appliances that are not fully wired, i.e. ready to plug in. The electrician should also be able to assist you with obtaining the agreement of the respective power supply utility required for the appliance installation.